

## Gorilla 4.6 New Features and Enhancements

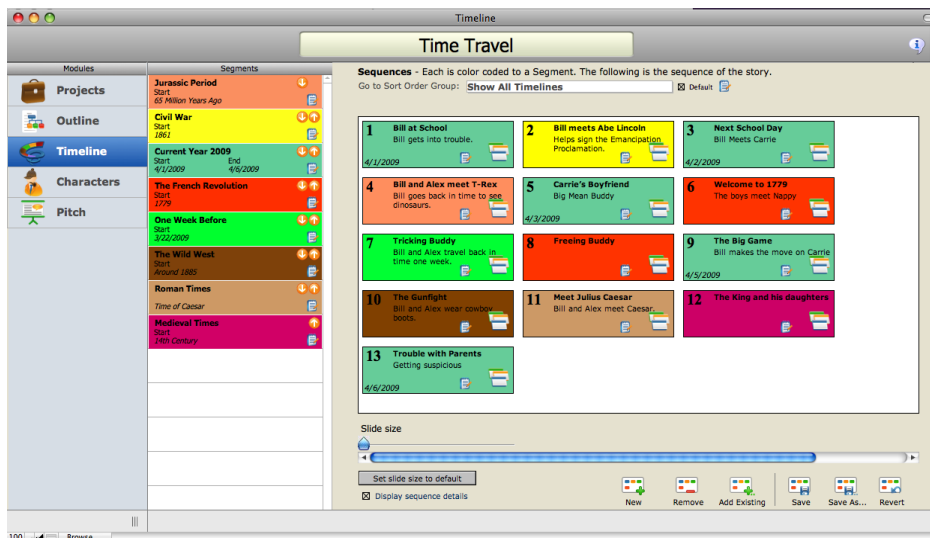
### Integrate StoryO with Gorilla

Gorilla 4.6 can import screenplay information from StoryO. In this way, you can organize your story, create sequences and index cards and then export your story information to Gorilla.

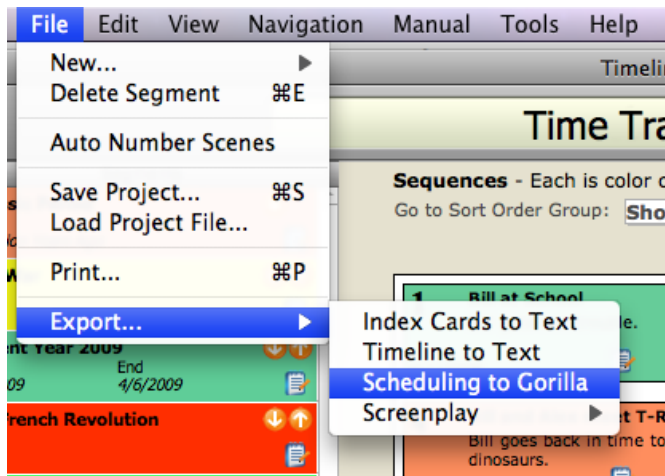
## Step-by-Step Instructions for Sharing StoryO information with Gorilla

### Step 1: Export StoryO information in Gorilla format.

1. Open StoryO and open the project you want to export.
2. Go to the Timeline module.



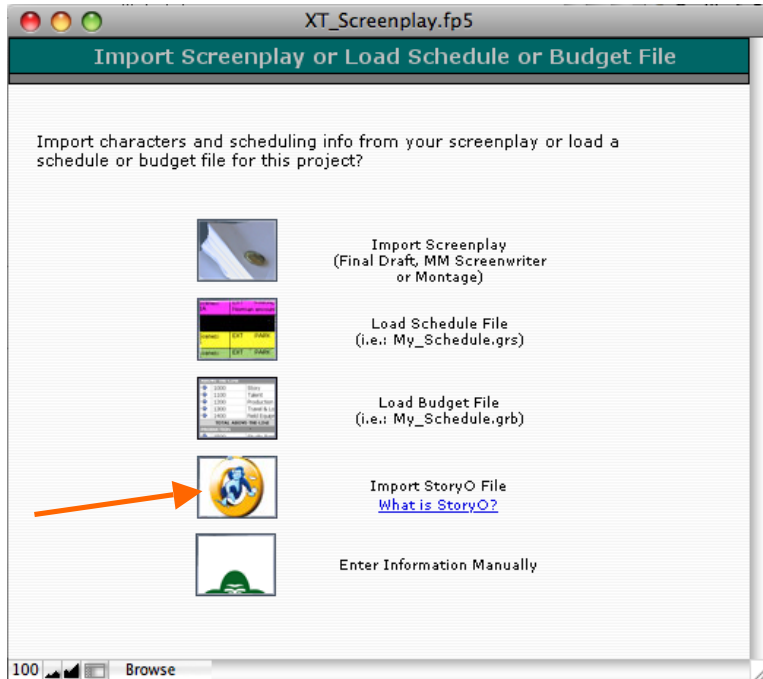
3. From the File menu select Export... and select the Scheduling to Gorilla option.



4. This will bring up a Save dialog for the exported file. You can name the file whatever you like but make sure to keep the “.tab” file extension.

## Step 2: Import StoryO .tab file into Gorilla.

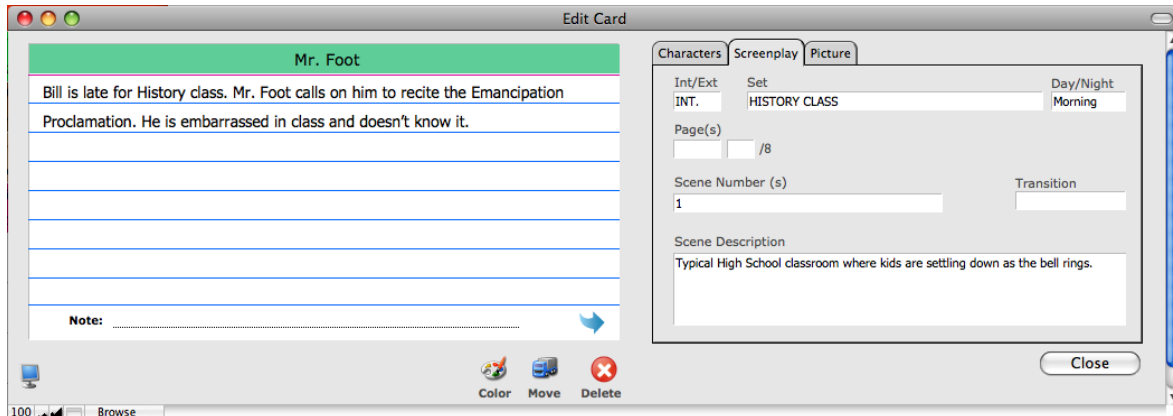
1. Open Gorilla (must be version 4.6 or above) and create a new project.
2. When prompted, select the StoryO option.



3. Find the .tab file that you exported from StoryO and select it for import.
4. After import, you will be prompted to create shoot days for this project. When finished, go to the Breakdown module where you will see your StoryO project converted into breakdown sheets.

## What information gets imported from StoryO?

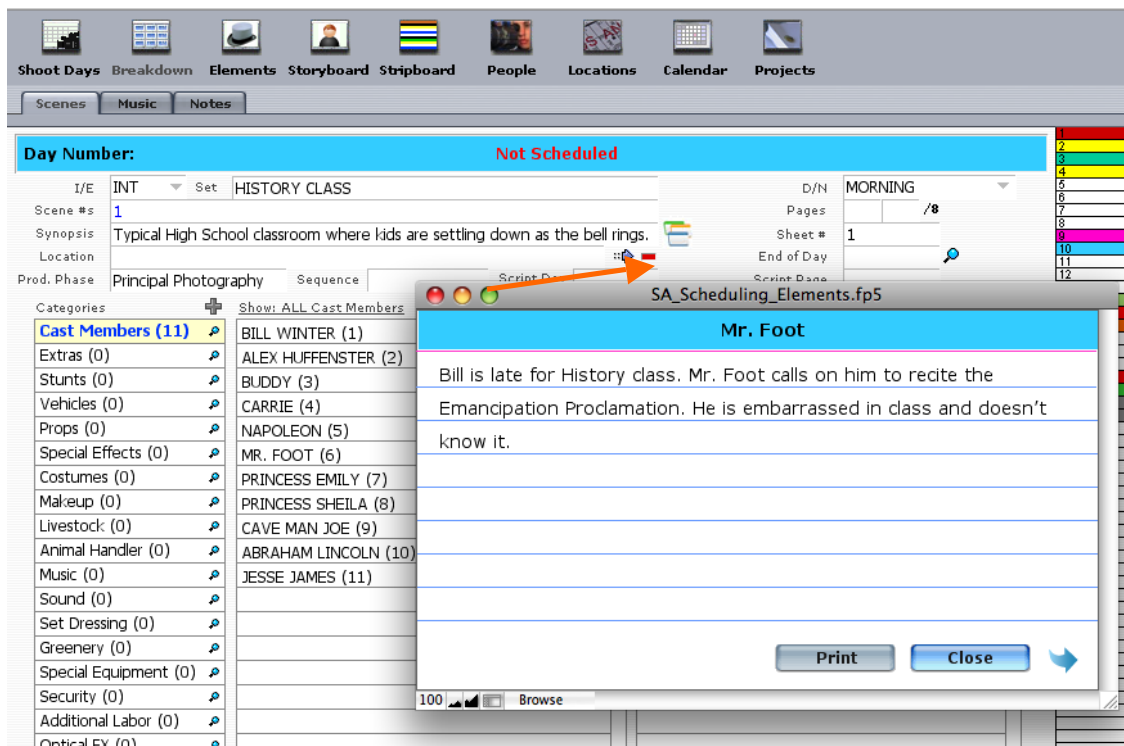
- Title of Index Card
- Back of Index Card
- Set field
- Characters attached to Index Cards
- Scene Description
- Front of Index Card
- I/E field
- D/N field
- Scene Number



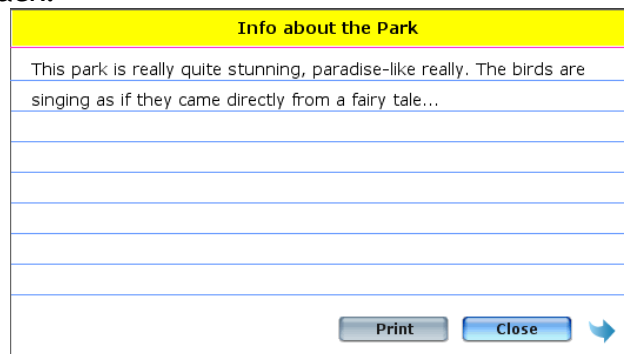
(screenshot is from StoryO index card detail view)

## Working with StoryO data in Gorilla.

To view your index cards that were imported from StoryO, select the Index Card button on the Breakdown Sheet screen:



You can enter more information about the story or the scene on each index card. You can also “flip” the index card over by clicking the blue arrow, and enter even more information on the back.



To print the index cards side by side on a full page, click the **Print** button.

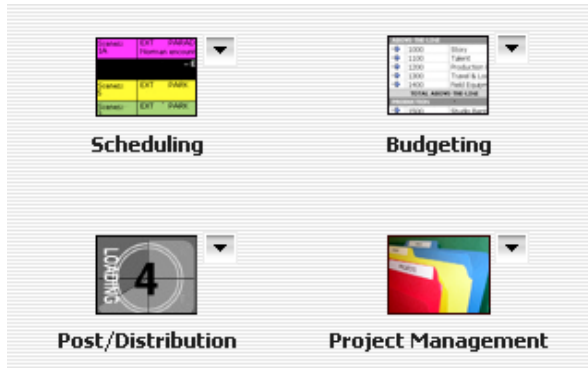
INDEX CARDS	
<p><b>Mr. Foot</b></p> <p>Bill is late for History class. Mr. Foot calls on him to recite the Emancipation Proclamation. He is embarrassed in class and doesn't know it.</p>	<p><b>Back of Card</b></p>
<p><b>Alex</b></p> <p>Bill and Alex have lunch in the school cafeteria. Alex is his best friend and is getting straight's A's. He is a genius and tells him that he is working on a Time Machine.</p>	<p><b>Back of Card</b></p>
<p><b>After School</b></p> <p>Bill goes over to Alex's house and Alex shows him the Time Machine. Bill tells him not to touch it. He does though and Bill is sent back into time!</p>	<p><b>Back of Card</b></p>
<p><b>Abraham Lincoln</b></p> <p>Bill finds himself on the steps of The White House. He knocks on the door and someone opens it. "May I help you, sir?". Bill responds that he needs to speak with the president immediately.</p>	<p><b>Back of Card</b></p>

---

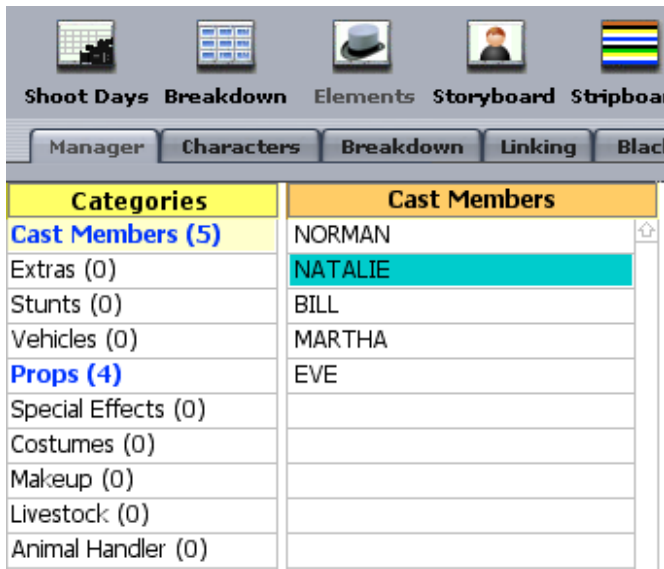
For more information about Gorilla or StoryO, please see the full product documentation that accompanies each product or visit us on the web at [www.junglesoftware.com](http://www.junglesoftware.com).

## Gorilla 4.5 New Features and Enhancements

1. Ability to access your project information directly from the Main Menu with the new Project Management button.



2. Enhanced Element Manager  
Click a Category and instantly see all the related elements for that category.



3. Better Budget Export to Excel  
Three new budget exports added: Topsheet, Account and Detail (shown below), which allows simple and direct export to a .txt file for easy import directly into Excel. This way anyone can modify budget data even if they don't have a copy of Gorilla.

Sort	Acct#	SubAccount	Account Name	Fringe	Amt	Units
0	Acct #	Sub Account	Account	Fringe	Amt	Units
1	1000	1001	<b>Story &amp; Script</b>			
2	1000	1001	Salary	0	1	
3	1100	1101	<b>Producer</b>			
4	1100	1101	Producer: Todd Wade	0	1	
5	1100	1102	<b>Director</b>			
6	1100	1102	Director: Aaton Cohen-Sitt	0	1	
7	1100	1103	<b>Associate Producer</b>			
8	1100	1104	<b>Narrator</b>			
9	1100	1105	<b>Lead Actors</b>			
10	1100	1105	Lead: NORMAN	0	1	
11	1100	1105	Lead: NATALIE	0	1	


#### 4. Export to Quickbooks

You can now export 4 sets of data for import into Quickbooks (or any other Accounting package), including Customers, Vendors (shown below), Accounts [from the Budget] and Items [from the Budget]. After exporting, open Quickbooks and use their mapping feature to match up the exported fields.

Export Map for Import into Quickbooks  
ALL VENDORS

Gorilla can export the following fields from the Budget module to another source file to be used in another format. Gorilla will export the following fields in the following order:

Export VENDOR Fields		
	Quickbooks Field Name	Will Export
1	Name (Required)	✓
2	Opening Balance	
3	Opening Balance (As Of)	
4	Company Name	
5	Salutation	
6	First Name	✓
7	Middle Initial	
8	Last Name	✓
9	Address 1	✓
10	Address 2	
11	Address 3	
12	Address 4	
13	Address 5	
14	Contact	



Quickbooks is a registered trademark of Intuit, Inc. Jungle Software has no affiliation with Quickbooks or Intuit.

Number of Records to Export: 0

5. Updated Ratebook with 2007/2008 Rates. Ratebook must still be purchased separately, but if you own the 2006/2007 Ratebook, this upgrade is included.
6. Licensee name no longer shows on the bottom of all reports.
7. Ability to sort elements on breakdown sheet display by either ID, Element Name or Category. In the example below, the items are sorted by Element name. This is achieved by clicking on the Sort button.

All Elements for this Breakdown Sheet		
BOWL OF FRUIT	<i>Set Dressing</i>	◀ ::▶
5. EVE	<i>Cast Members</i>	◀ ::▶
FORK	<i>Props</i>	◀ ::▶
2. NATALIE	<i>Cast Members</i>	◀ ::▶
1. NORMAN	<i>Cast Members</i>	◀ ::▶
PARK BENCH	<i>Set Dressing</i>	◀ ::▶
RUBBER DUCKY	<i>Props</i>	◀ ::▶

8. Ability to add a Location to the Value List menu.  
The Location module was never linked to the production locations which were used for rehearsals and meetings. Now you can add a location from the Location module to that list of available locations.
9. Easier to create a schedule if you are not importing a screenplay. Many users were not importing screenplays and it was awkward to create a schedule without importing a screenplay. The work flow process of creating production phases, shoot days and stripboards is much easier and more intuitive.

Plus other minor improvements, enhancements and bug fixes.



Jungle Software

[www.junglesoftware.com](http://www.junglesoftware.com)

© 2009 Jungle Software. StoryO, Gorilla, Jungle Software and the StoryO and Jungle Software logos are trademarks of Jungle Software. All rights reserved.